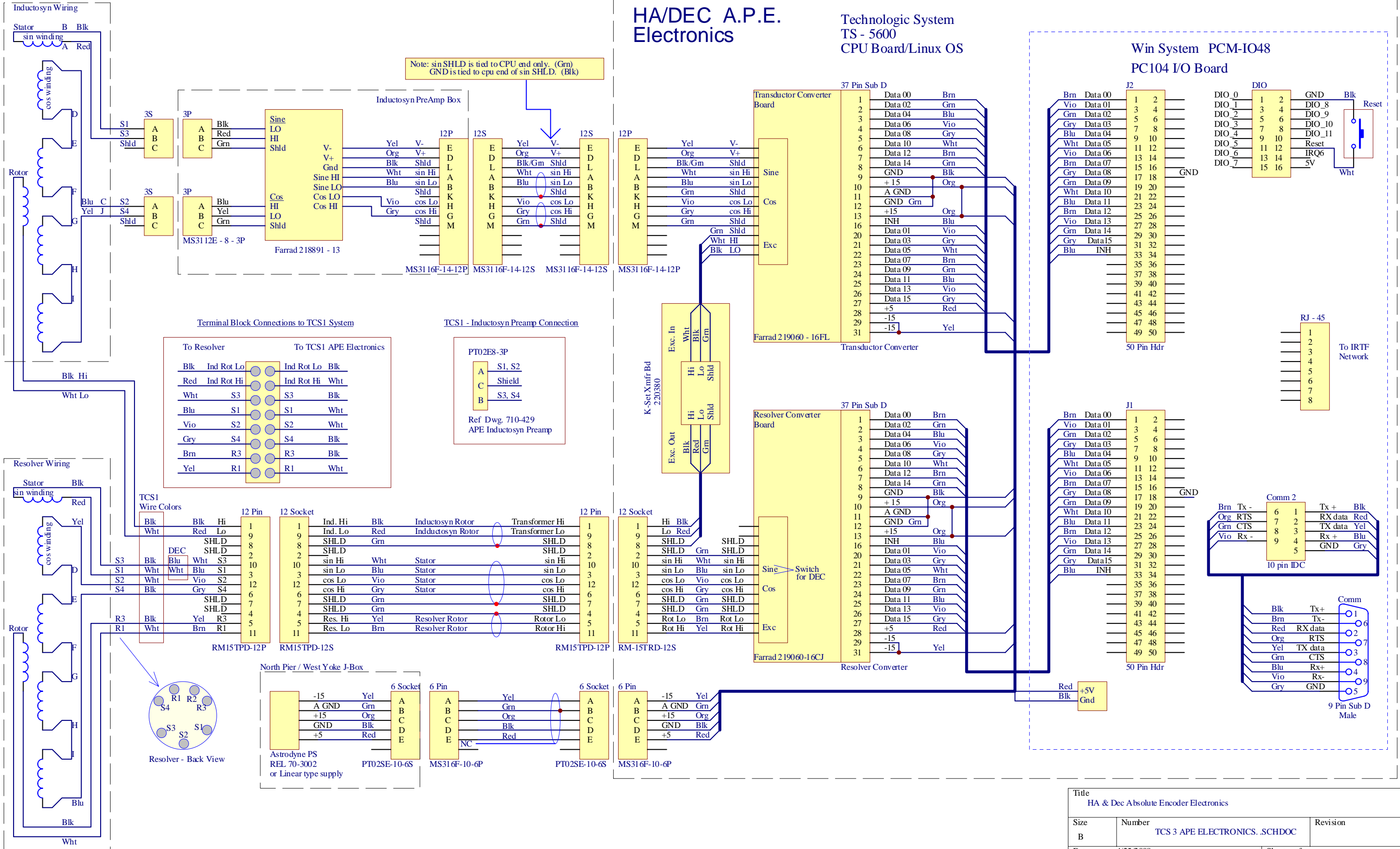


HA/DEC A.P.E. Electronics

Technologic System
TS - 5600
CPU Board/Linux OS

Win System PCM-IO48
PC104 I/O Board

Note: sin SHLD is tied to CPU end only. (Grn)
GND is tied to cpu end of sin SHLD. (Blk)



Terminal Block Connections to TCS1 System

To Resolver	To TCS1 APE Electronics
Blk Ind Rot Lo	Ind Rot Lo Blk
Red Ind Rot Hi	Ind Rot Hi Wht
Wht S3	S3 Blk
Blu S1	S1 Wht
Vio S2	S2 Wht
Gry S4	S4 Blk
Brn R3	R3 Blk
Yel R1	R1 Wht

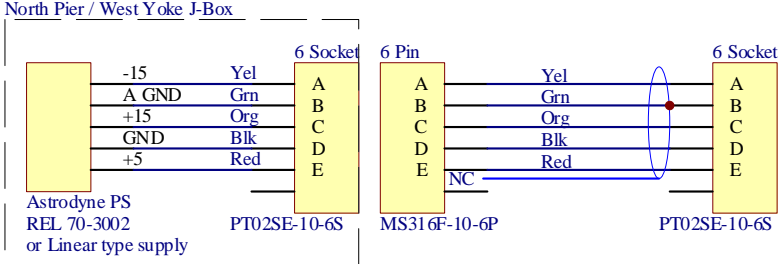
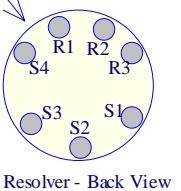
TCS1 - Inductosyn Preamp Connection

PT02E8-3P	Wiring
A	S1, S2
C	Shield
B	S3, S4

Ref Dwg. 710-429
APE Inductosyn Preamp

TCS1 Wire Colors

12 Pin	12 Socket	Inductosyn Rotor	Transformer Hi	12 Pin	12 Socket
1	1	Ind. Hi	SHLD	1	1
2	2	Ind. Lo	SHLD	2	2
3	3	sin Hi	SHLD	3	3
4	4	sin Lo	SHLD	4	4
5	5	cos Lo	SHLD	5	5
6	6	cos Hi	SHLD	6	6
7	7	cos Lo	SHLD	7	7
8	8	cos Hi	SHLD	8	8
9	9	Res. Hi	SHLD	9	9
10	10	Res. Lo	SHLD	10	10
11	11	SHLD	SHLD	11	11



Title HA & Dec Absolute Encoder Electronics		
Size B	Number TCS 3 APE ELECTRONICS .SCHDOC	Revision
Date: 4/25/2008	Sheet of	
File: H:\Documents and Settings\...T3-3011-AP...EMATIC.SCHDOC		